

Illustrated Construction Manual: The Golden Dividers

© Michael Monscheuer

<https://michelswunderland.de/solderiron/gozirk.html>

A kit with only 4 x 6 congruent parts and some fittings. Besides glue, scissors, craft knife and ruler, fine sandpaper and a screwdriver are needed for assembly. Golden paint (Revell No.94) and a suitable brush are used to paint the open white edges. It is also useful to have a weight (see below) to press the glue joints.



Step 1: The parts A1 to A6 prepared for the upper main leg.



Steps 2 & 5: Here the instructions were deviated from: A6 was also glued.



Step 6: The parts B1 to B6 prepared for the lower main leg.



Steps 7 & 10: Here the instructions were deviated from: B6 was also glued.



A thick book as a weight to press the glue during the hardening process.



Steps 11 & 16: Analogue to the previous procedure:

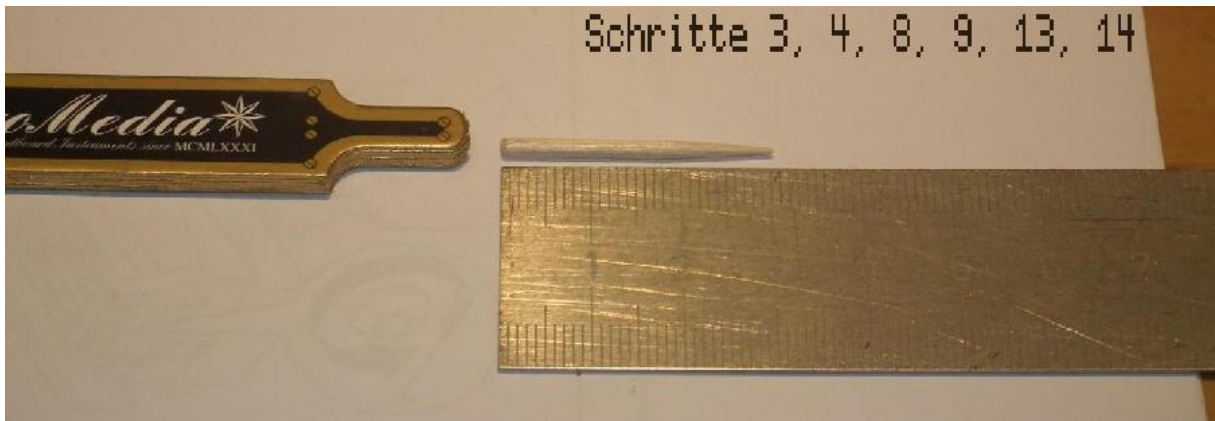
Golden leg (C1 - C6) and steering bracket (D1 to D6)...



Steps 12 & 16: Golden leg and steering bar after glueing the single parts.



Golden colour to decorate the open edges.



Steps 3, 4, 8, 9, 13, 14: The tips of the legs were cut off (30mm) and rounded with sandpaper.



Steps 3, 4, 8, 9, 13, 14: The tip length of the legs must be exactly 5mm. As toothpicks tend to break, it is not advisable to glue them in the legs - it would then be difficult to replace them...if necessary, wrap them with a piece of paper.



Steps 17 – 19: The legs, the steering bar and the fittings ready for assembly.



Finished model - ready to be measured with!