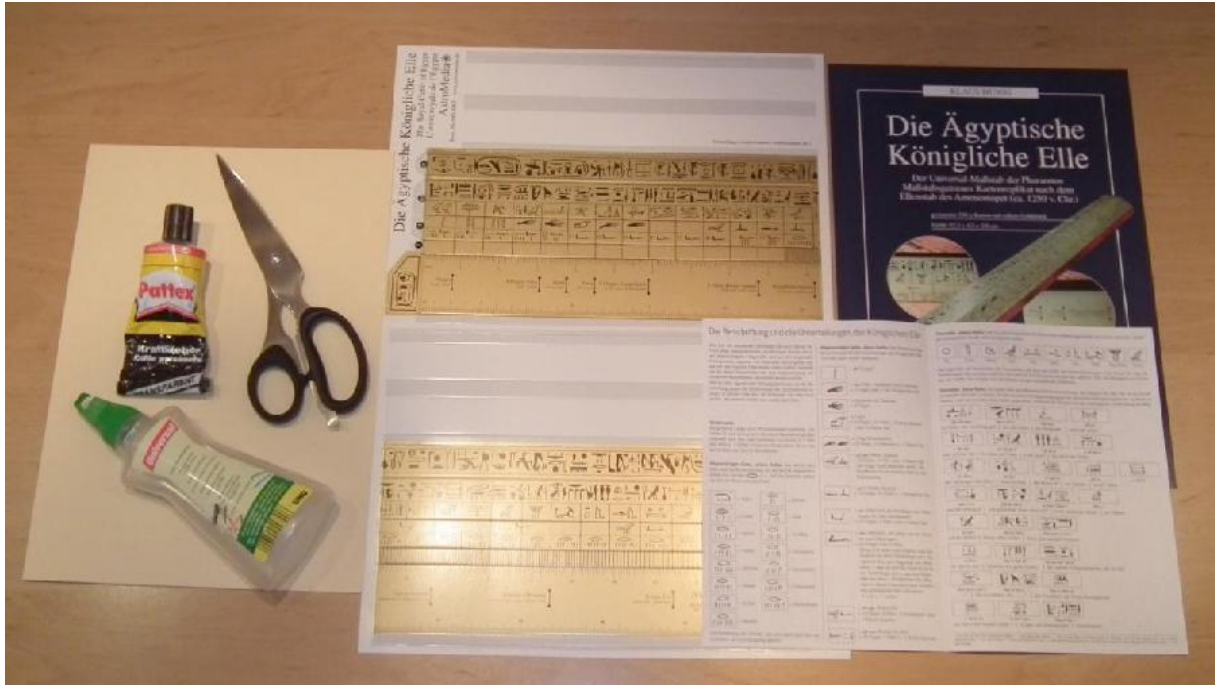


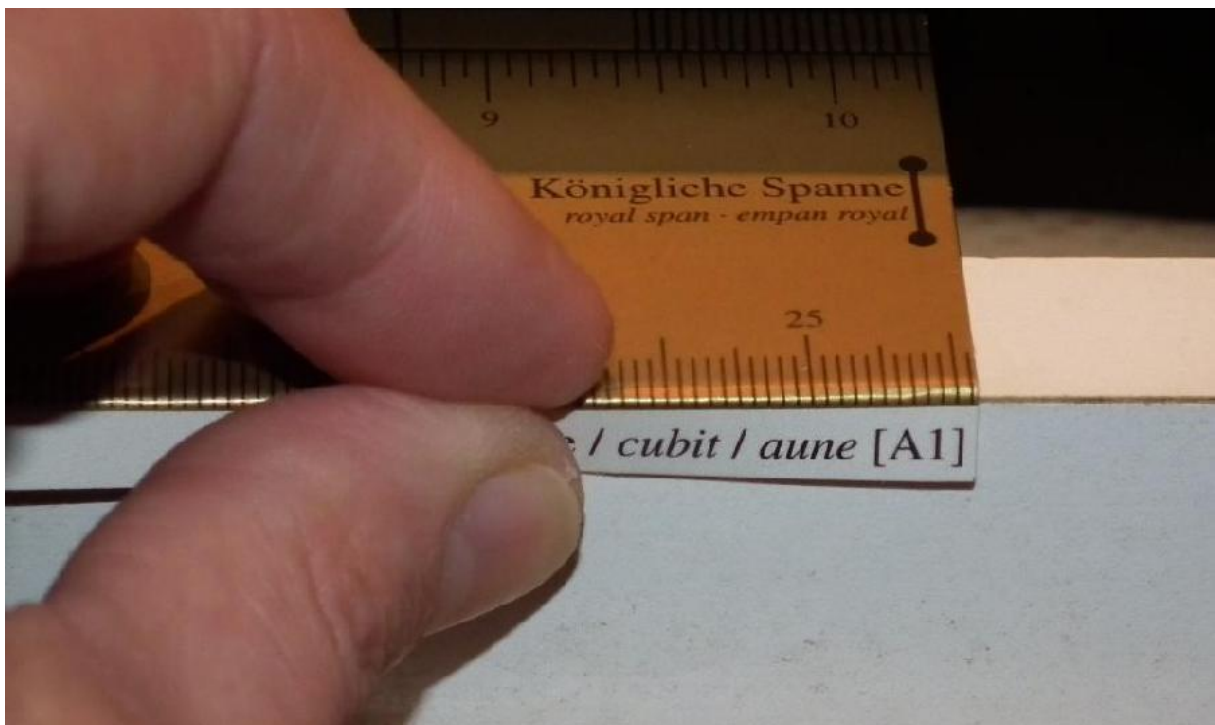
Illustrated construction manual: The Royal Egyptian Cubit

© Michael Monscheuer

<https://michelswunderland.de/solderiron/kaelle.html>



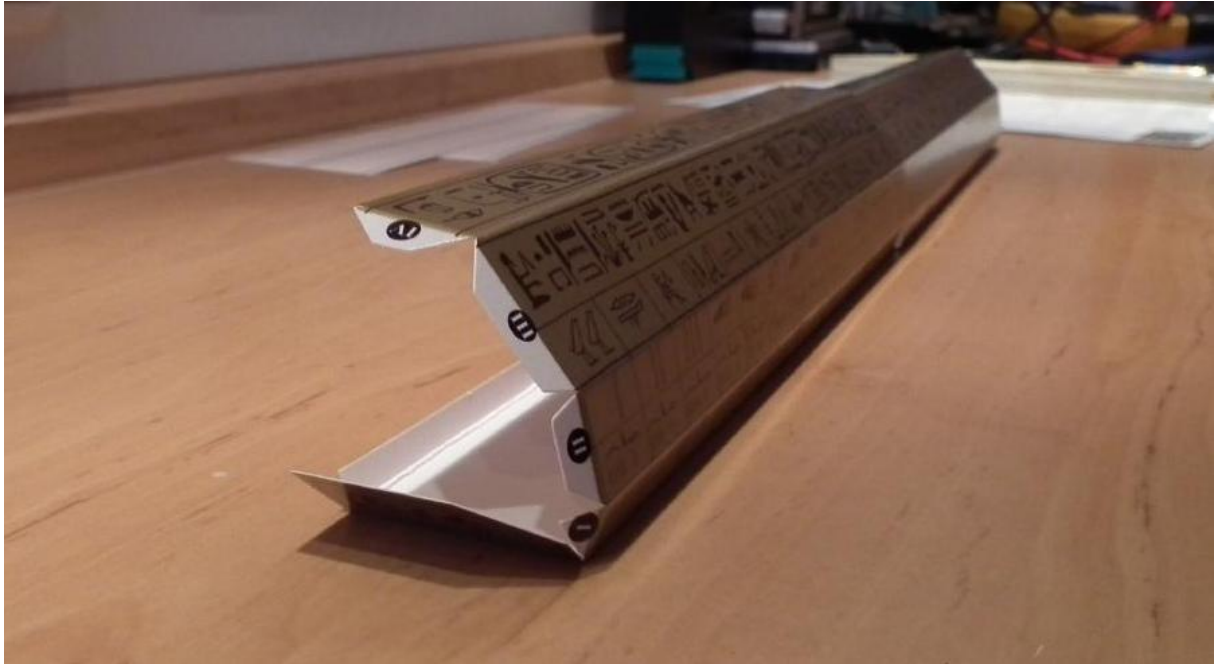
A cardboard kit with only four parts. Besides glue and scissors, toothpicks (for spreading the glue on the glue tabs) and a weight for pressing two glues.



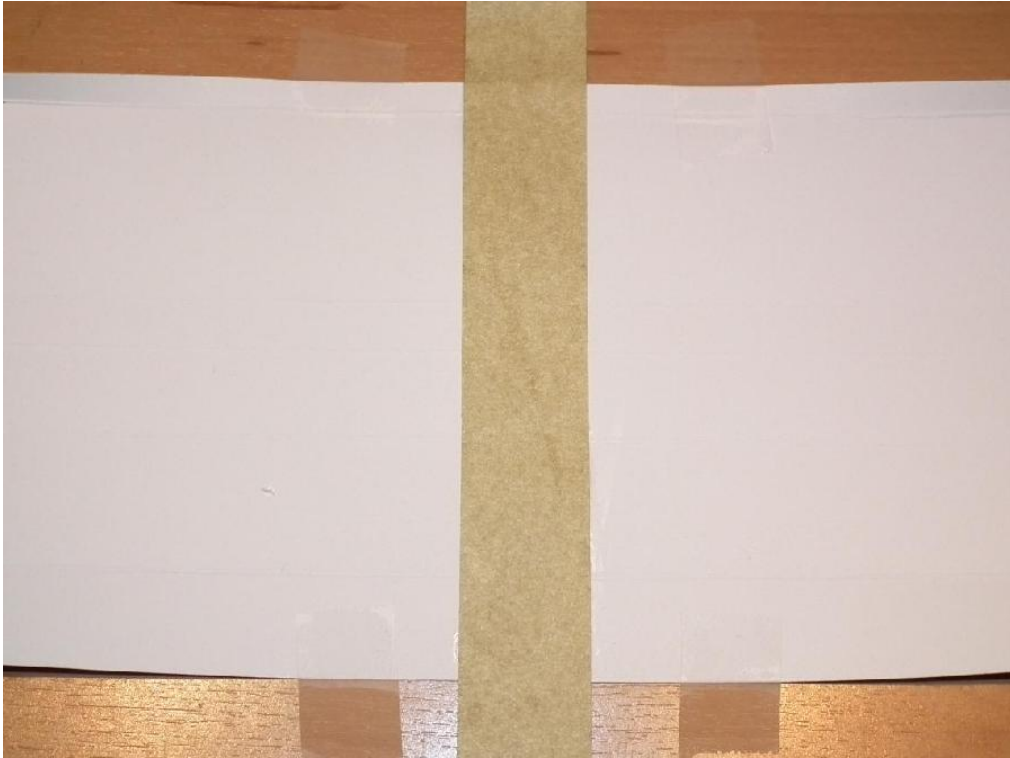
After releasing the parts from the cardboard, all the grooves are folded. This is particularly easy and accurate on one edge.



The two finished folded parts of the body.



The finished folded parts of the body in side view.



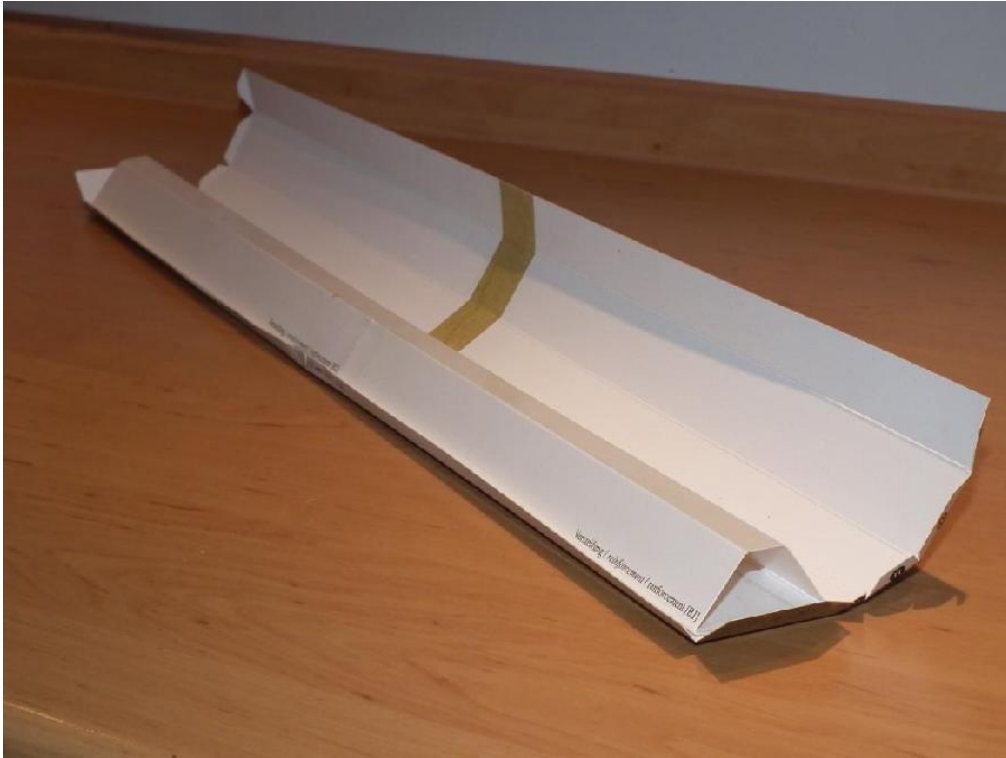
To join the two parts of the cabinet, a strip of paper is glued over the aligned parts of the cabinet using a paper glue.

It is helpful to fix the body parts to the base with a little easy-to-loosen adhesive film.

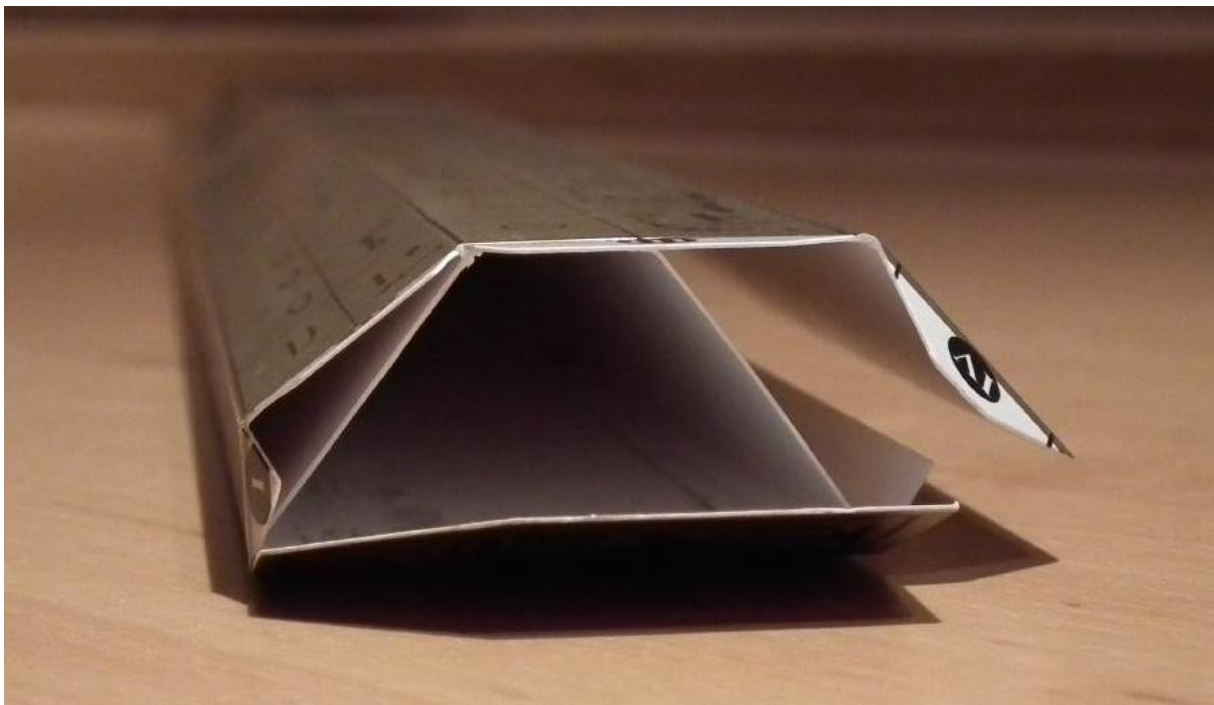


A weight ensures even distribution of the adhesive and prevents curling during drying.

For the other glues, no paper glue is used, but a solvent-based multi-purpose glue.



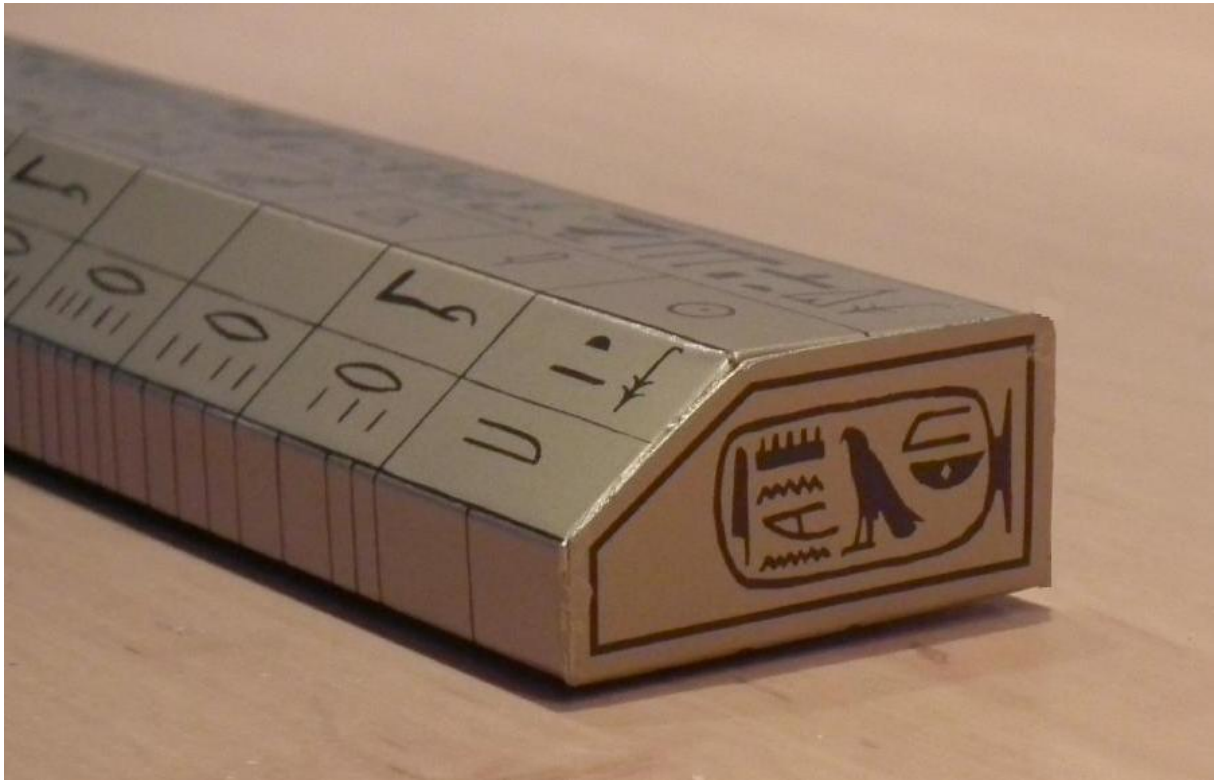
Now glue the folded reinforcement into the assembled body, both parts of which have also been joined with a strip of paper (as shown above for the body).



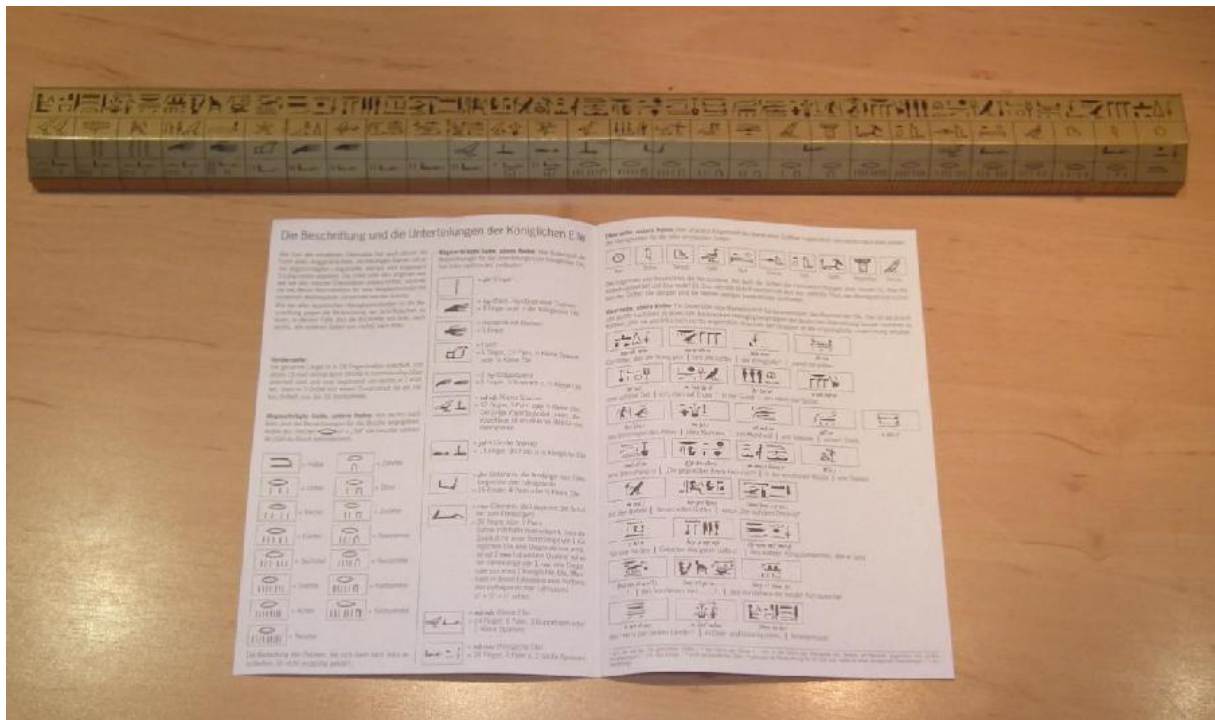
Gluing the top of the carcass to the reinforcement.



Gluing the long edge of the carcass - a weighting prevents the parts from slipping apart before drying.



With the final gluing of the side flaps the model is finished.



Finished model - ready to be measured!

Now, with the help of the accompanying booklet, one can get a rather vivid picture of the ancient Egyptians' travails with the art of surveying!